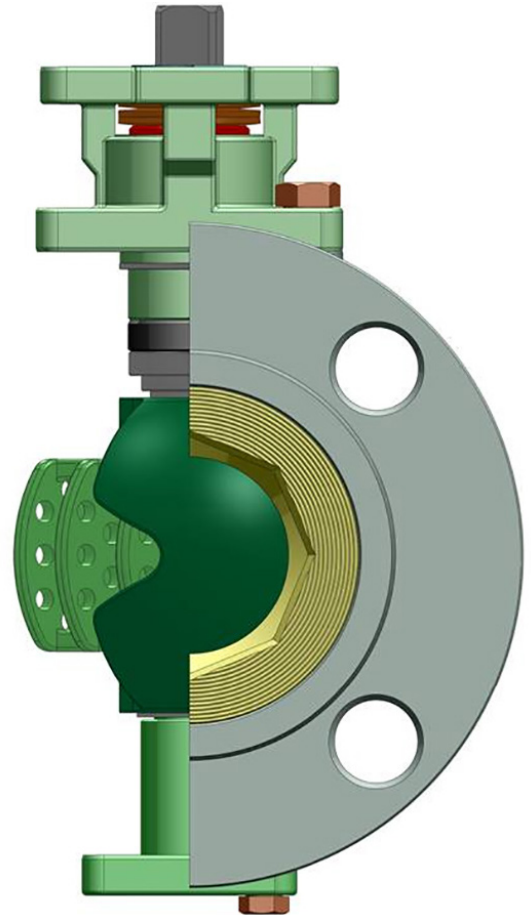


# DM9900 Series

## Segmented & Anti-Cavitation V-Port Control Valve

### Design Features

- Size range: 1-1/2" - 6"
- ISO 5211 direct mount design
- ANSI Class 150, 300, 600, 900
- Flanged and flangeless versions available
- Live loaded packing
- Protected bearings, top & bottom
- Easy installation and versatility
- Standard ISA 75.04 face-to-face; optional: ANSI B16.10 short pattern
- Extremely low actuator torque
- J trim for cavitation/noise abatement
- WCB, 316SS, 317SS and other alloy materials available
- Metal seated
- Patented



### Ordering Schematic

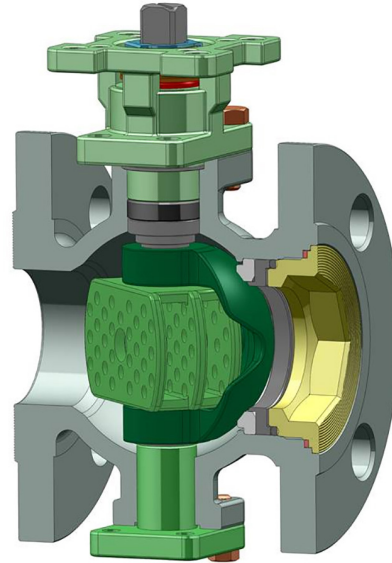
Series	Anti-Cavitation	Body	Trim	Port	Packing	Seat	End Connections
DM99	J	2 WCB 3 316SS 4 Alloy 20 6 317SS 7 Hast. C 9 Duplex	3 316SS 4 Alloy 20 6 317SS 7 Hast. C 9 Duplex	F Full Port R Red. Port	G Graphoil TM TFM 1600 TC TFM 4215	M Metal	F1 ANSI 150 (ISA 75.04 f to f)*



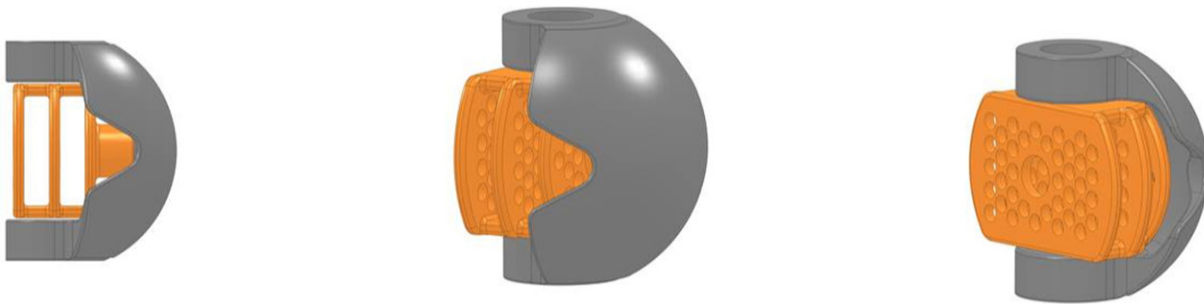
4665 Interstate Drive • Cincinnati, OH 45246  
 Phone: 513.330.6354 • Fax: 513.731.6939  
 www.jflowcontrols.com  
 info@jflowcontrols.com (email)

## Description of J-Trim Option

The J Trim option can help with liquid cavitation and aerodynamic noise problems. The pressure drop is divided into a series of small pressure drops and separates the flow stream into many small jet streams. This provides a combination of cavitation/noise abatement with high capacity, high rangeability and the capability to handle impure fluids.

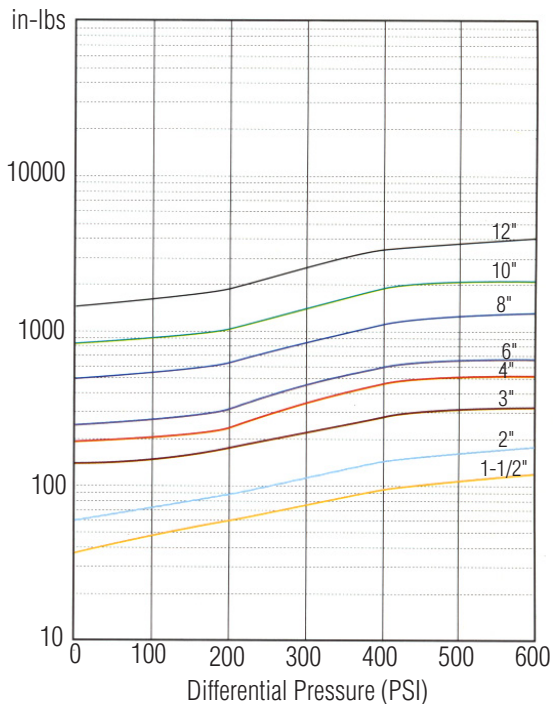


## J Trim Option



Now available with J Trim option! The valve's application can now range from very low-flow and high accuracy service. This is ideal for additive and coloring lines and pilot plants. Cavitation and aerodynamic noise is also reduced. The J Trim is a self-cleaning design which handles contaminated flows without plugging.

## Actuator Sizing Torque



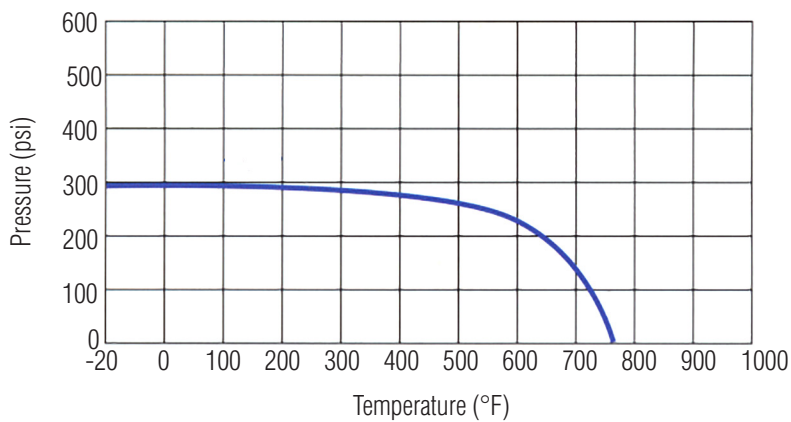
Torque is based on clean, clear liquid

## DM9900F Series - Size & Class (1-1/2" - 6")

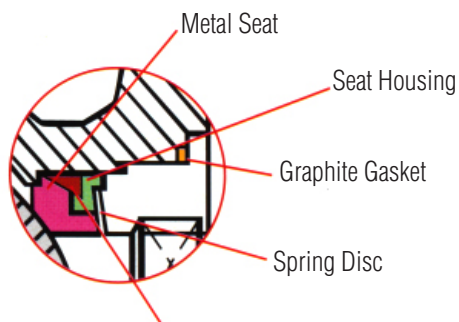
Nominal Diameter		DM9900 Series Flanged	Cv Max
inches	mm	Class 150	
1-1/2"	40		--
2"	50		47
3"	80		160
4"	100		250
6"	150		540

The segmented V-Port ball valve can be used in modulating control services or "on-off" services.

## Pressure Temperature Chart (ANSI 150 Metal Seat)



## Metal-To-Metal Contact Seats

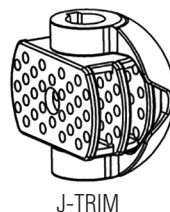
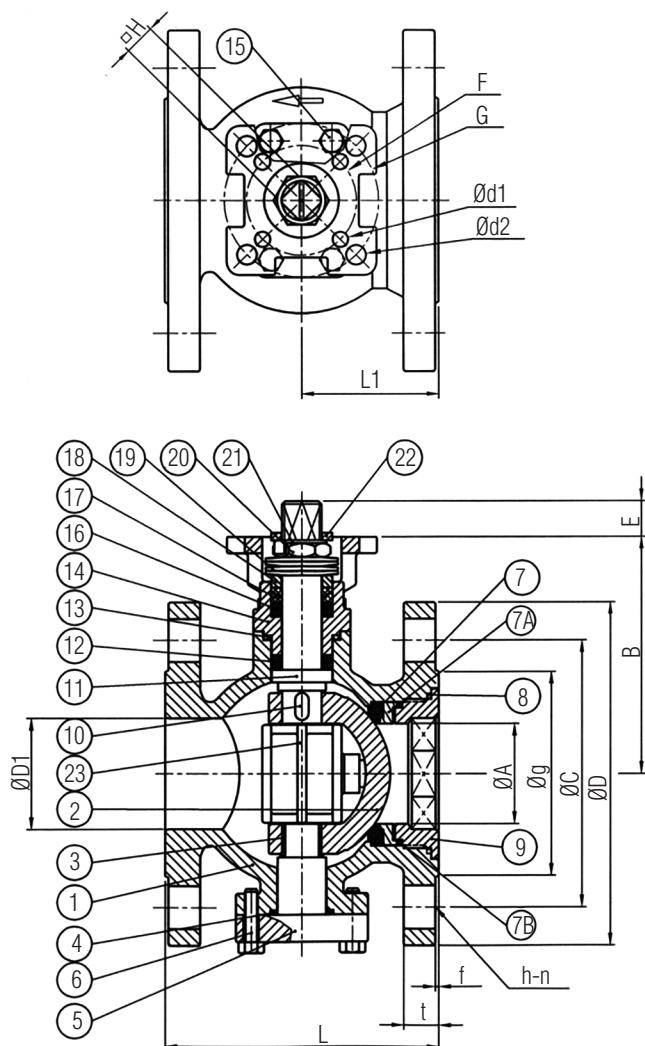


Suitable for erosive services, fibers, chemical fluids with suspended solids, and high temperature applications.

Metal seat with hardened stellite contact surface and 316 stainless steel segmented ball with tungsten carbide coating ANSI Class IV shutoff.

Seat Back Seal

## Dimensions & Call Outs



No	Name of Parts	Materials
1	Body	A351 Gr. CF8M
2	Ball Segment	A351 Gr. CF8M
3	Bearing	PTFE+50%SS
4	Gasket	TFM1600
5	Trunnion Cap	A351 Gr. CF8M
6	Trunnion Cap Bolts	SS 304
7	Seat	TFM1600
7A	Seat Housing	SS 316
7B	Back-Up Seal	Viton (O-Ring)
8	Insert Gasket	TFM1600
9	Insert Cap	A351 Gr. CF8M
10	Key	SS 316
11	Stem	SS 316
12	Bearing	TFM4215
13	Bonnet Gasket	TFM1600
14	Bonnet	A351 Gr. CF8M
15	Bonnet Bolts	SS 304
16	Bearing	TFM4215
17	Stem Packing	TFM1600
18	Gland	SS 304
19	Belleville Washer	SS 304
20	Stem Nut	SS 304
21	Nut Stop	SS 304
22	Space Washer	SS 304
23	Noise Reduction Plate	A351 Gr. CF8M

Size Inches	A	B	D1	E	F	G	d1	d2	H	L		L1	Flange Dimensions (Class 150)						
										ISA	Class 150		D	Bolt hole			t	g	f
														C	h	n			
1-1/2"	1.378	4.252	1.496	0.55	1.969	2.756	0.276	0.362	0.551	4.50	6.50	2.244	5.0	3.88	0.625	4	0.56	2.88	0.06
2"	1.772	4.433	1.969	0.55	1.969	2.756	0.276	0.362	0.551	4.88	7.00	2.441	6.0	4.75	0.750	4	0.62	3.62	0.06
3"	2.598	5.520	3.248	0.94	2.756	4.016	0.362	0.449	0.669	6.50	8.00	3.425	7.5	6.0	0.750	4	0.75	5.00	0.06
4"	3.157	6.087	3.839	0.94	2.756	4.016	0.362	0.449	0.669	7.62	9.00	4.047	9.0	7.5	0.750	8	0.94	6.19	0.06
6"	4.488	7.559	6.024	1.02	4.016	4.921	0.449	0.531	0.866	9.00	10.5	4.881	11.0	9.5	0.875	8	1.00	8.50	0.06



4665 Interstate Drive • Cincinnati, OH 45246  
 Phone: 513.330.6354 • Fax: 513.731.6939  
[www.jflowcontrols.com](http://www.jflowcontrols.com)  
[info@jflowcontrols.com](mailto:info@jflowcontrols.com) (email)